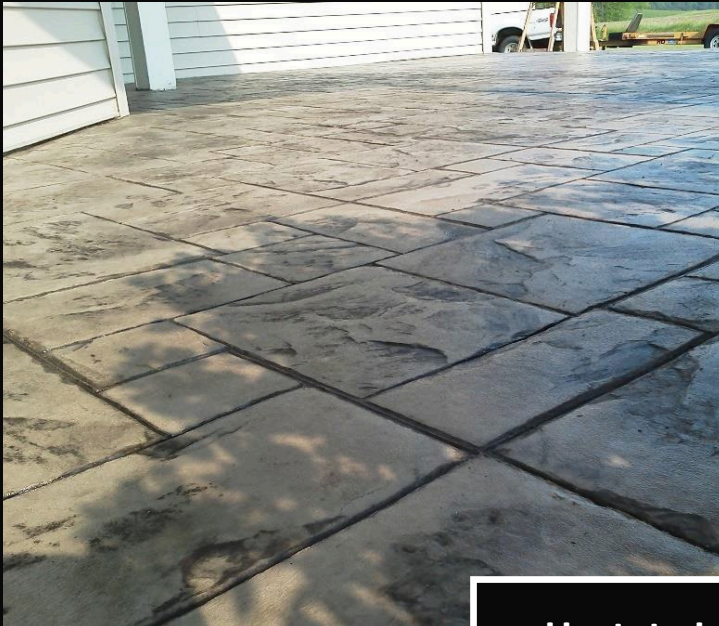


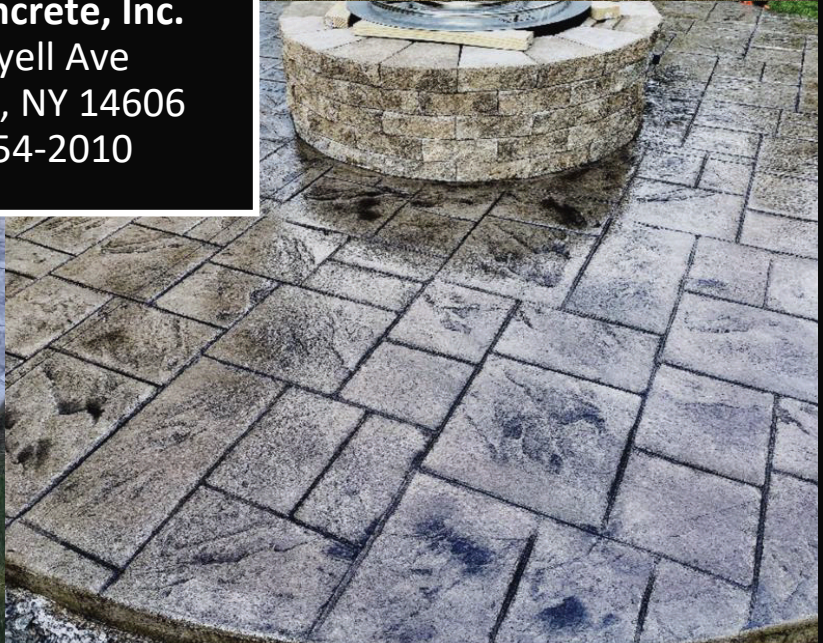


UPSTATE CONCRETE SUPPLY & RENTAL^{LLC}

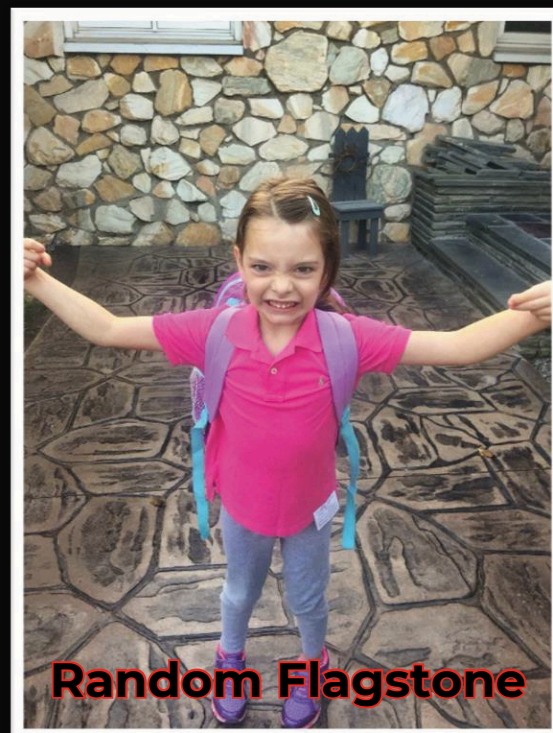
Stamp Guide & Photo Gallery



Upstate Increte, Inc.
1029 Lyell Ave
Rochester, NY 14606
(585) 254-2010



Second Only to Nature!

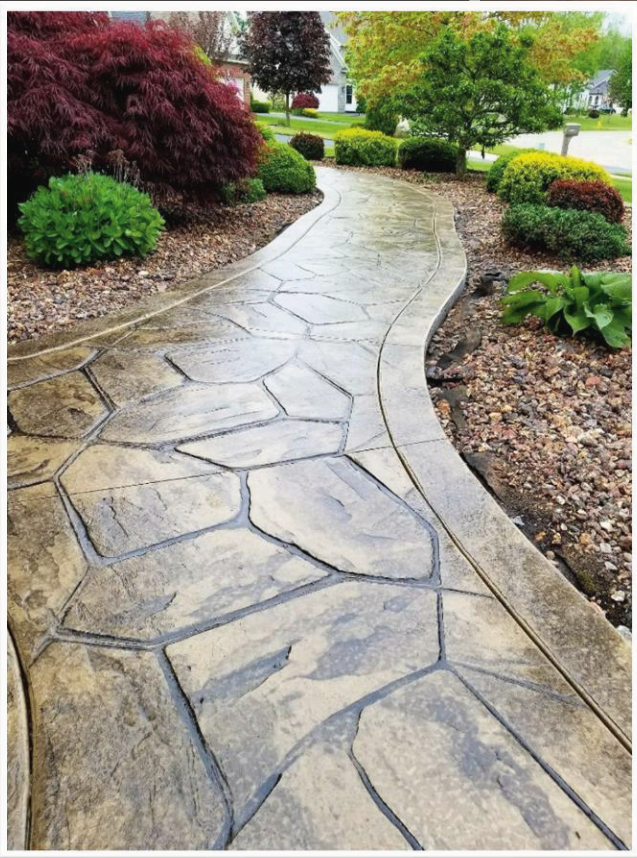


Upstate Increte, Inc

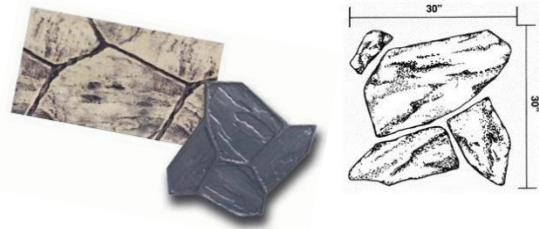
1029 Lyell Ave
Rochester, NY 14606

(585) 254-2010
customerservice@upstateincrete.com

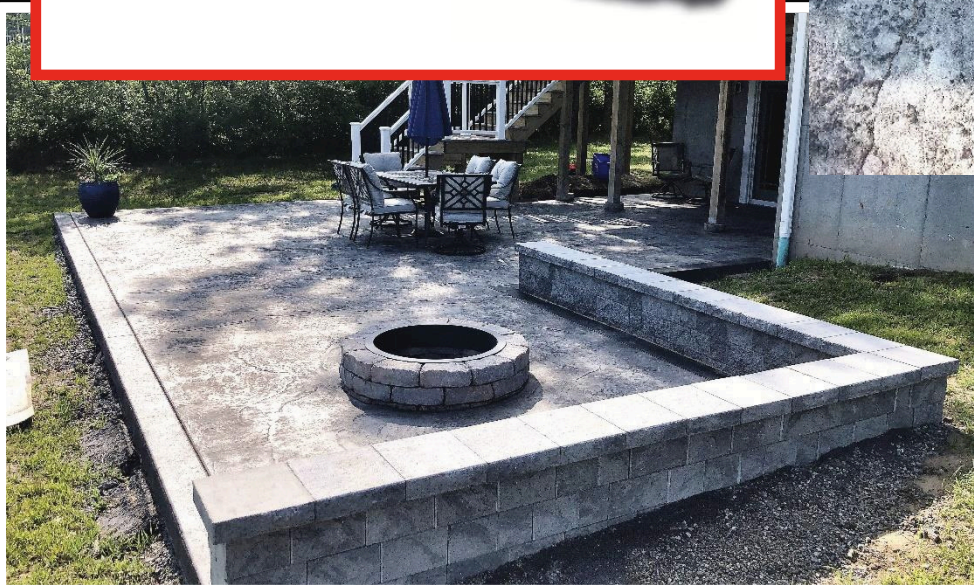


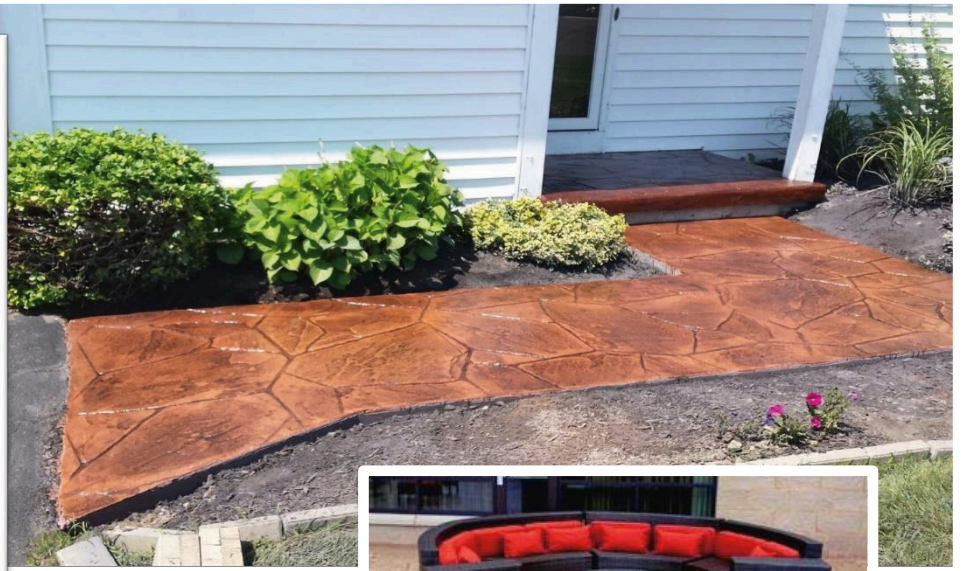
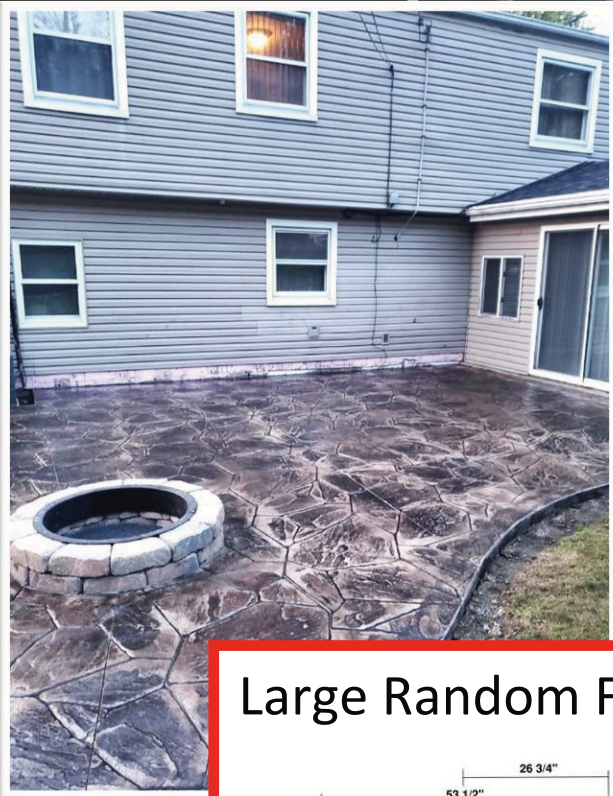


Random Flagstone

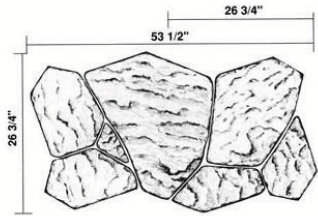


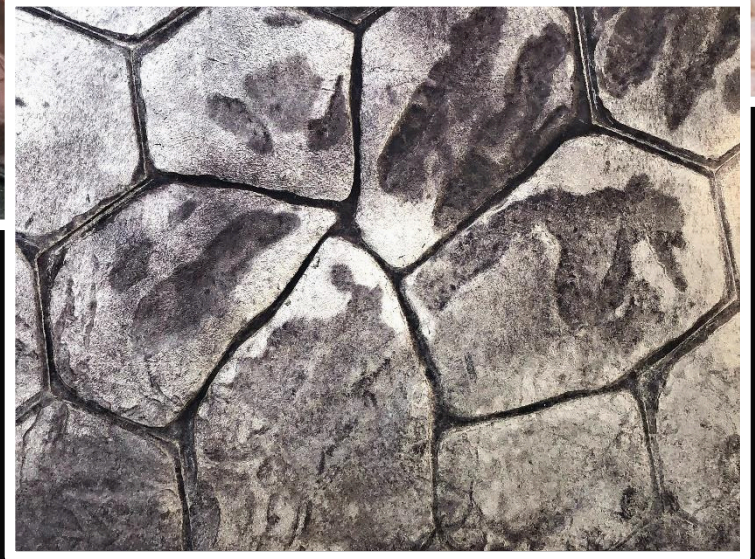
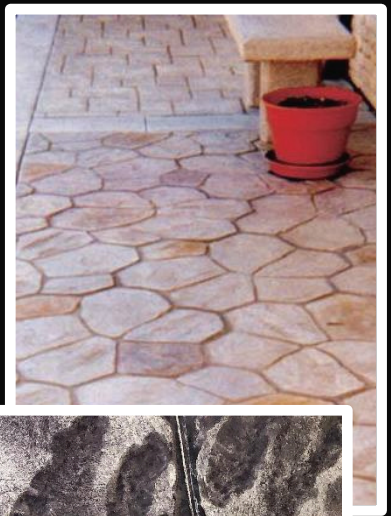
Slate Texture Skin





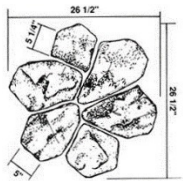
Large Random Flagstone



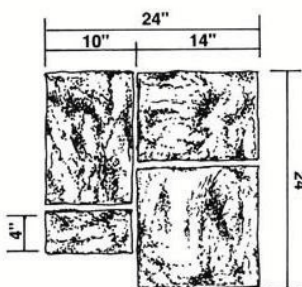


Small Set**

Flower Rock

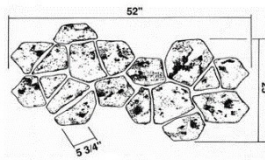


Notched Ashlar Slate





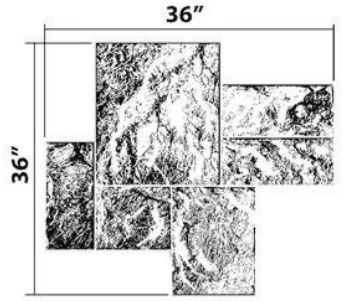
River Rock



Olde English Slate Skin



Grand Slate



Philly Bluestone





Grand Slate



Slate Skin



Notched Olde English Ashlar Slate



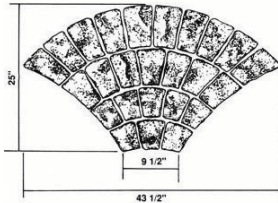
Grand Slate



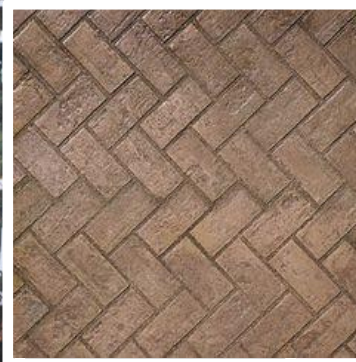
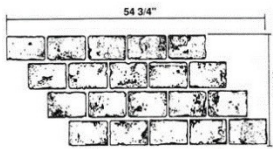
Slate Skin



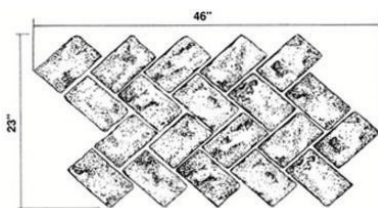
Olde London Mermaid Granite



Running Bond Used Brick

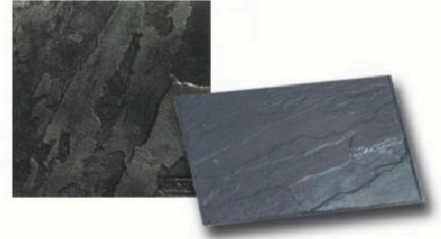
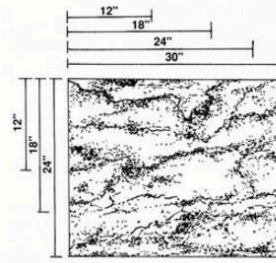


Herringbone Used Brick

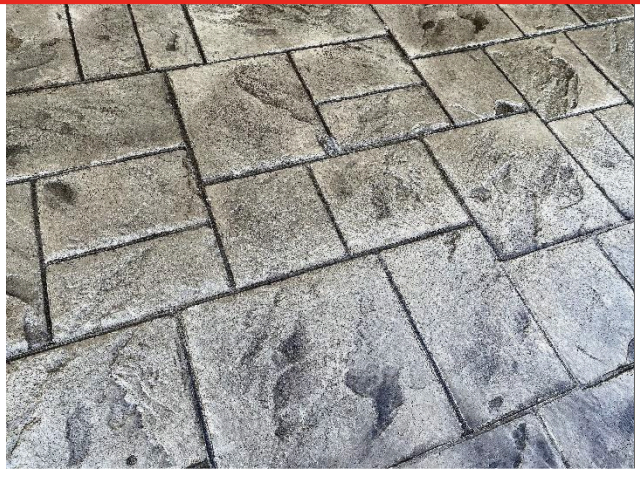
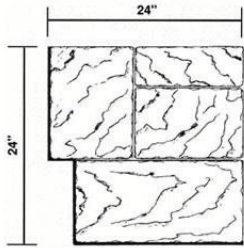




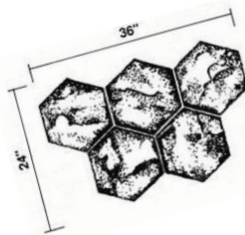
Olde English Slate (puzzle piece)



Notched Olde English Ashlar Slate



Hexagon Slate





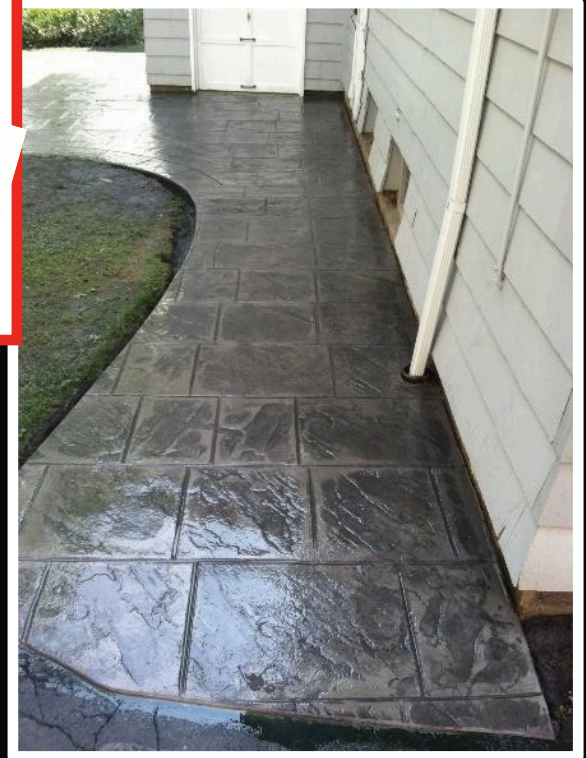
Slate Skin



Grand Slate



Olde English Sidewalk Slate

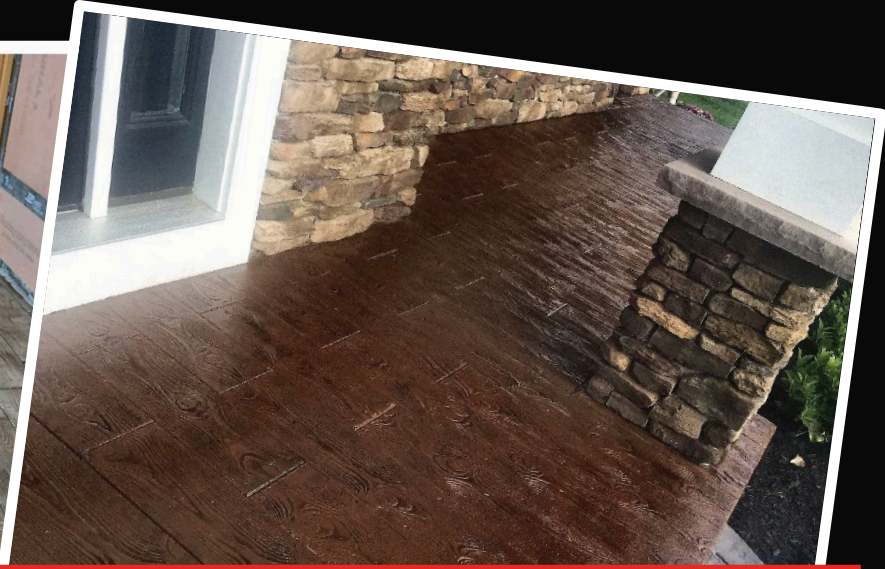


UPSTATE INCRETE

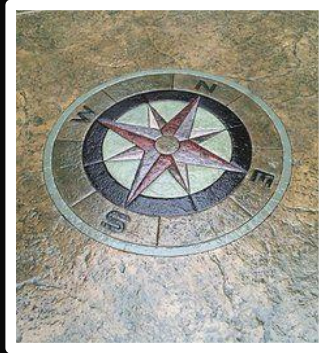
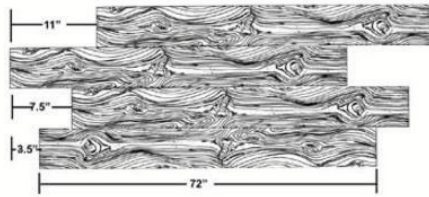
We're not only business, but family.

Rochester Location
49 Adelaide St.
(585) 254-2010

Geneva Location
2705 Lyons Rd.
(315) 325-4548



Ganged Pegged Wood Plank 8"



Compass Stamp

Tool size is "48"

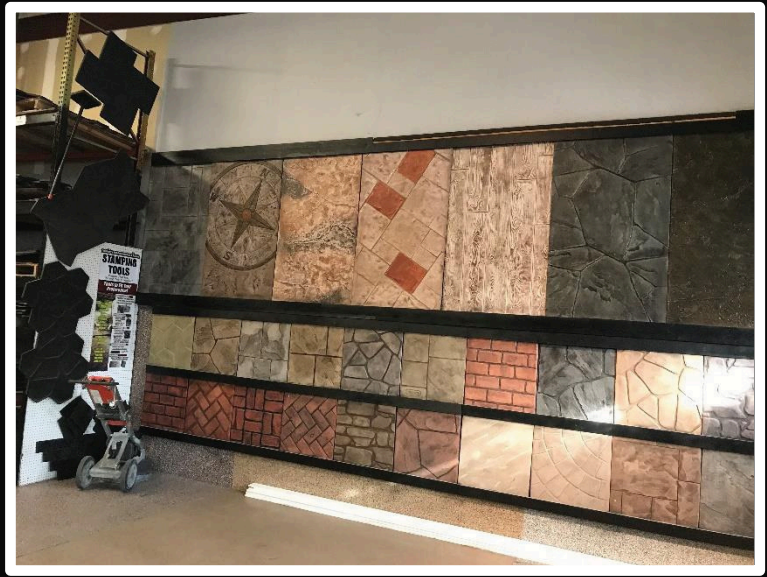


Belgian Stacked Bond 37 1/2" x 45/8"



Soldier Course Used Brick 33" x 9"





Design Center
Training
Showroom!



Popular Integral/Base Colors



QUARRY GRAY



HARBOR GRAY



WEATHERED BUFF



COTTAGE TAN



EARTH BUFF

Popular Release/Accent Colors



CHARCOAL



DARK GRAY



MEDIUM GRAY



DARK BROWN



MEDIUM BROWN

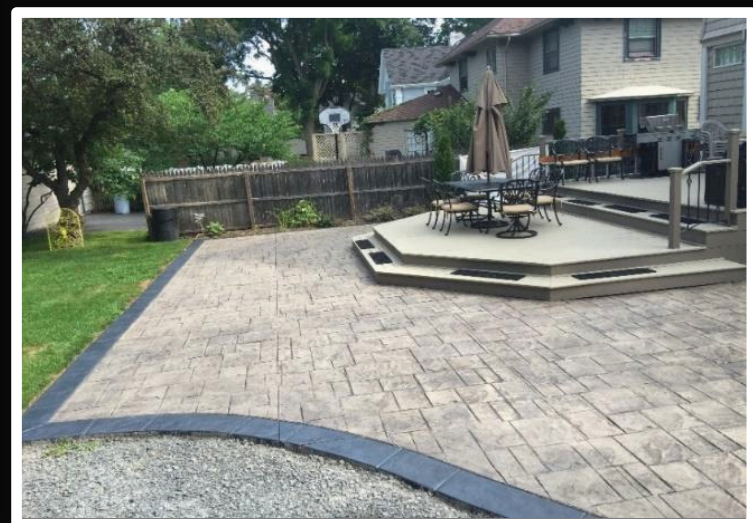
Please Note:
Other Colors are available in
Base & Accent. These are the
most popular & common
colors often in stock!

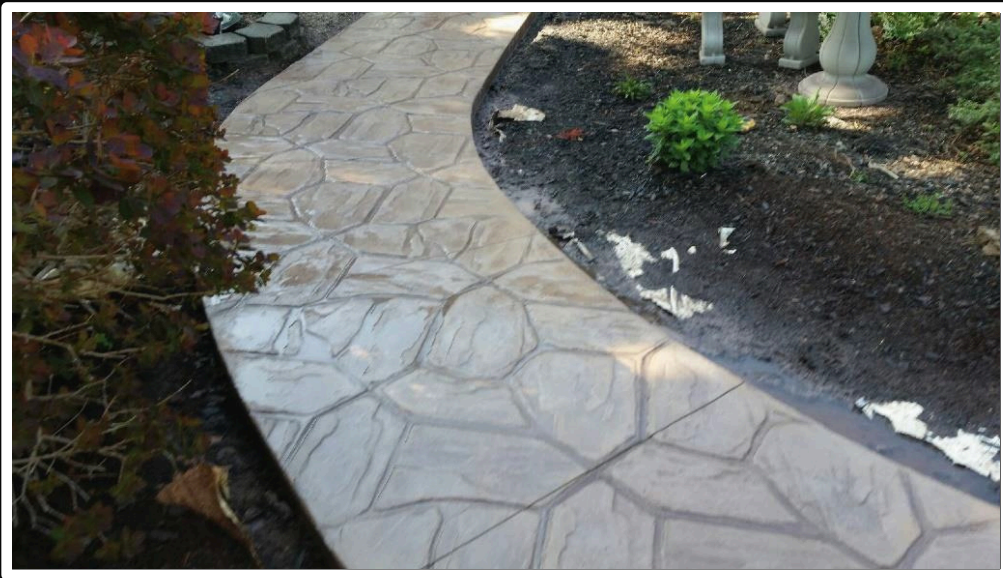
*Visit our showroom for
what is currently available
instock or special order*

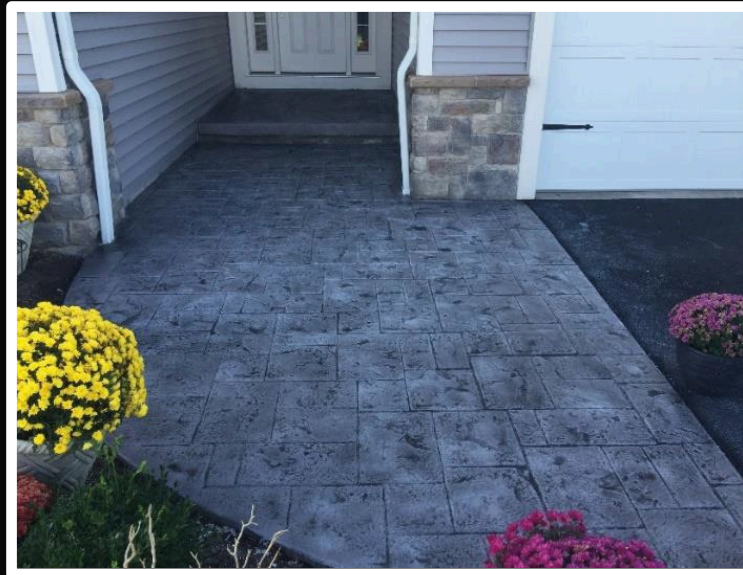
Due to variations of job site conditions, actual colors on the chart can and will vary slightly. Conditions that cause variation are inconsistent slump (water content), finishing and curing methods, weather conditions, and concrete raw materials. A job-site or test slab sample should be made using specified materials, and the finishing and curing techniques to be used. For color consistency, batch to batch uniformity must be maintained.

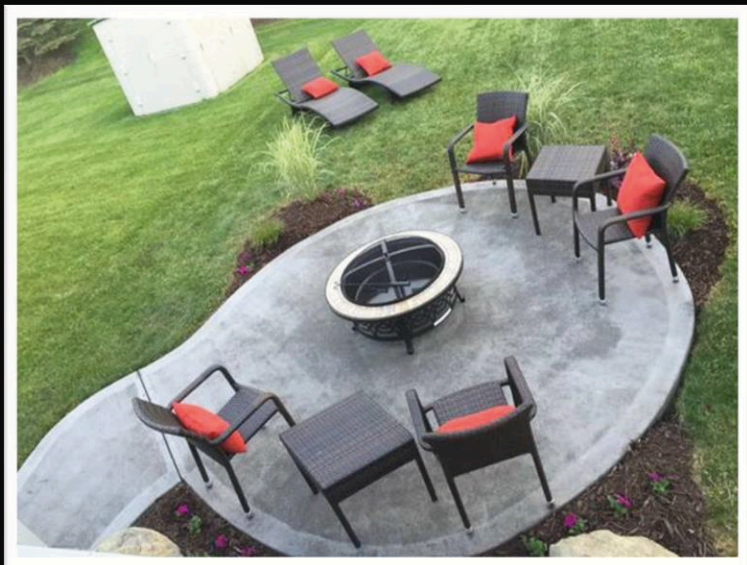
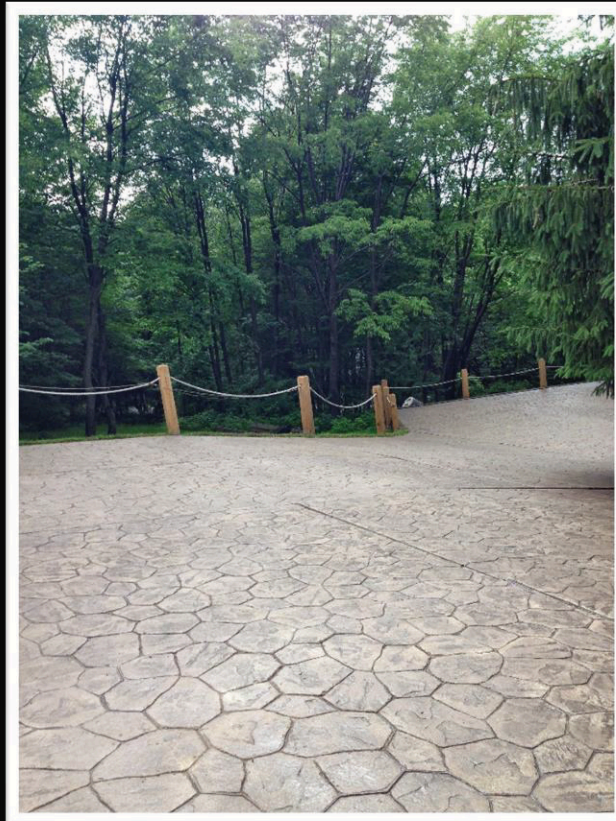
Photo Gallery

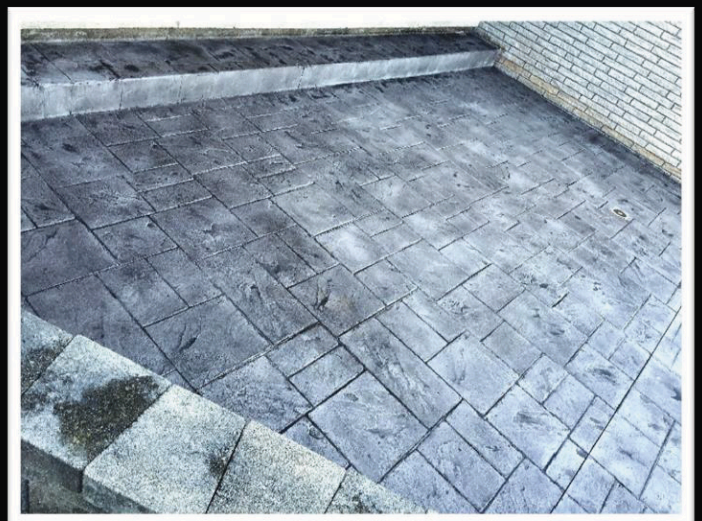
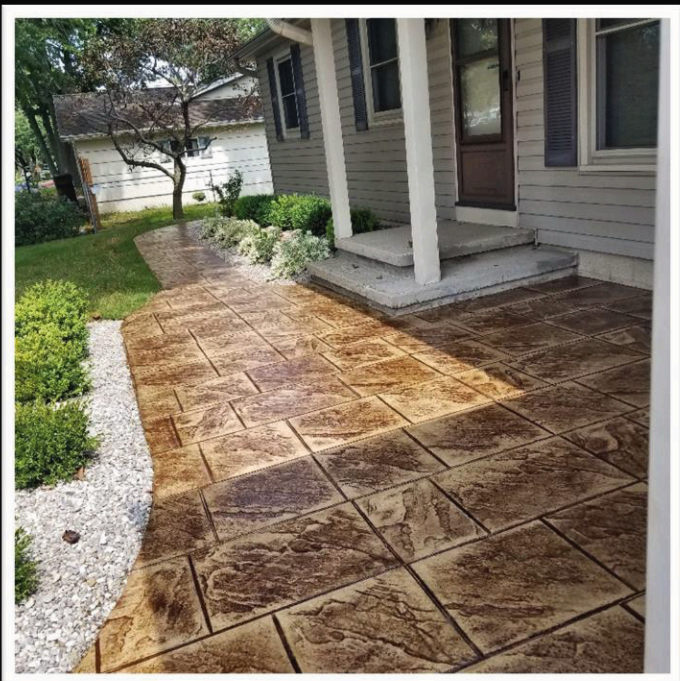
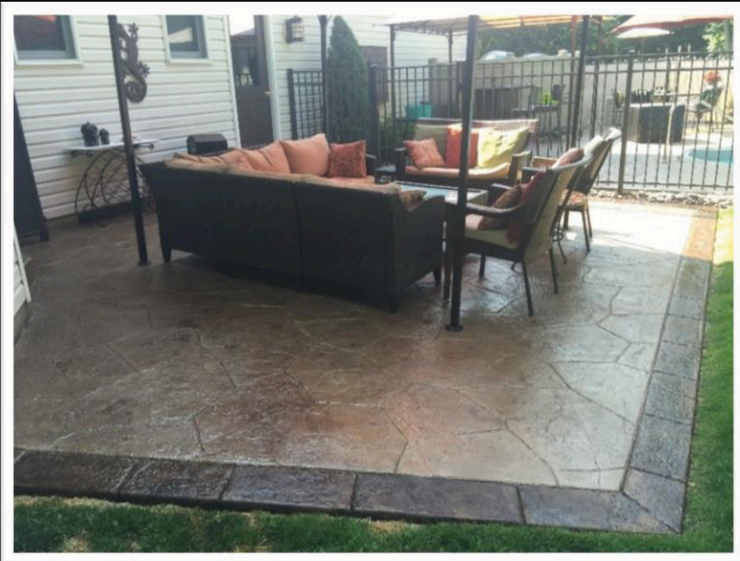
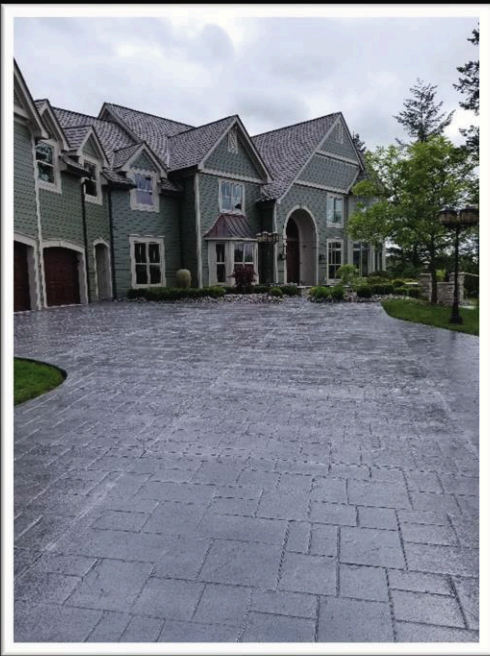
~Special thank you to our team and all the contractors who donated their pictures to preview in our catalog! We enjoy working together to bring all our customers and clients a better result and experience!







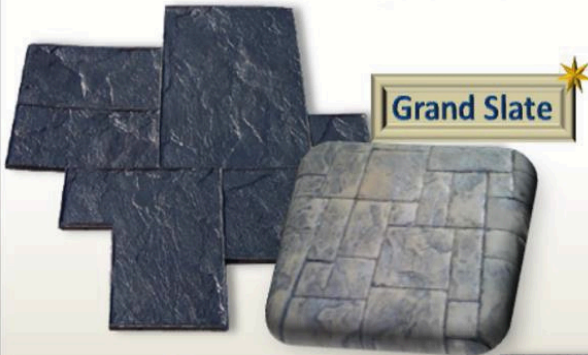




* Indicates that a stamp is Thin-Crete Overlayment compatible

SLATE

STONE



Grand Slate

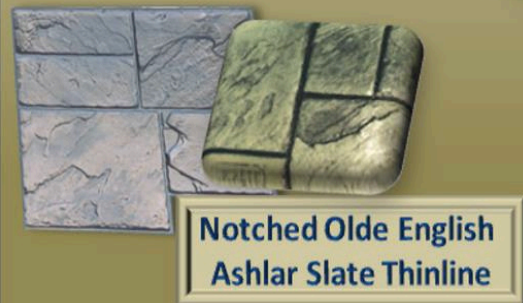


Notched Ashlar Slate



Philly Bluestone

Hexagon Slate



Notched Olde English
Ashlar Slate Thinline



Olde English Slate

Olde English Sidewalk Slate



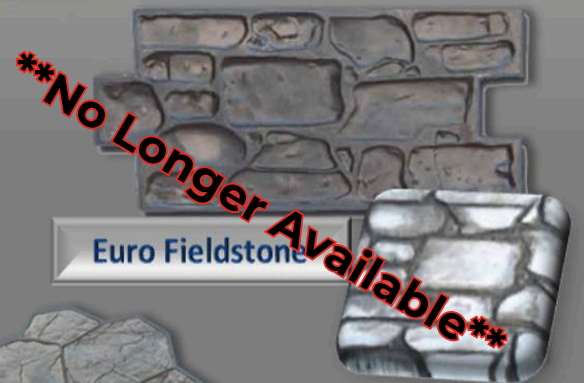
River Rock



Large Random Flagstone



Random Flagstone



Euro Fieldstone

****No Longer Available****



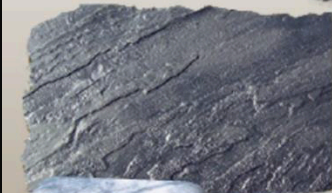
Flower Rock

SEAMLESS TEXTURE SKINS

(5'x5' & 4'x4')



Slate



Olde English Slate

WOOD

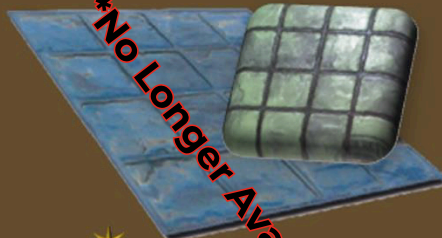


Ganged Pegged Wood Plank (8")

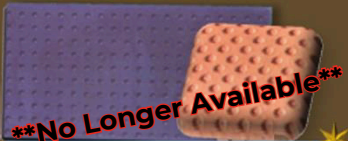
MISCELLANEOUS



Compass



Walmart Ground Tile
6" Square



ADA Tactile

GRANITE



Olde London Mermaid

BRICK



Running Bond Used Brick



Herringbone Used Brick



BRICK BORDERS



Belgian Stacked Bond Border



Soldier Course Used Brick Border

...a comparison



INCRETE STAMPED CONCRETE SYSTEM

APPEARANCE



Beautifully Elegant
Beautiful natural appearance duplicating the natural look of stone, slate, granite, brick, and wood in an unlimited assortment of color and pattern combinations to match any design theme and specification.

INITIAL COST & INSTALLATION



Moderate
Comparable installation costs with shorter installation times for typical commercial and residential projects.

MAINTENANCE



Low
Increased surface strength of 8,000 psi. Sealed and protected surface is impervious to grease and oil staining. Maintenance consists of a hose and broom. A high performance system for high traffic.

WINTER DURABILITY



High
Increte's unique chemistry renders the surface non-porous and resistant to freeze thaw cycles as well as salt and alkali. Increte is also compatible with radiant heat systems.

INTERLOCKING CONCRETE PAVERS



Limited
Fewer pattern and color combinations limited to brick and cobblestone patterns. Muted, flat colors that fade and discolor. Extremely porous material accepts staining very easily.



Moderate Sand Substrate
Installation costs are moderate but susceptible to higher maintenance costs due to settling, shifting, heaving and washouts.
High Concrete Substrate
Installation costs over concrete substrates are high.



High
Pavers susceptibility to settling, shifting, and washouts create pedestrian hazards and require costly maintenance or resetting. Pavers' high porosity allows for staining and rapid discoloring which requires cleaning or replacement. Individual pavers can be replaced but with a noticeable difference in appearance.



Low
Due to their porosity, pavers are highly susceptible to freeze thaw cycles causing heaving and settling of the surface as well as staining and erosion from salt and alkali.

INCRETE... The paver alternative!

Are you tired of stained and unsightly pavers that require constant maintenance and resetting but still want a decorative look around your home or property?



INCRETE gives you more...

- ✓ **Design Flexibility**
Increte duplicates the look of natural stone, slate, granite, brick and wood at a fraction of the cost of natural materials.
- ✓ **More Patterns**
Increte is available in over 100 standard patterns with custom pattern capabilities.
- ✓ **More Colors**
Increte is available in over 900 color combinations with custom colors available.
- ✓ **Increased Durability**
Increte boasts a surface strength of 8,000 psi, twice the strength of ordinary concrete.
Increte is a monolithic slab that will not settle, shift and heave.
- ✓ **Less Maintenance**
Increte is non porous and resistant to staining.

INCRETE is the clear-cut choice over pavers!

Make a choice for the future, choose the INCRETE stamped concrete system for your home or property.



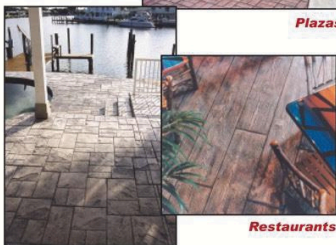
Hotel Entries

Driveways



Streets

Plazas



Pool Decks

Restaurants

Specified by architects worldwide, INCRETE is presently in use throughout 70 countries including all 50 states in the U.S., in a variety of applications from residential drives, walks, patios, pool decks and foyers, to commercial and municipal applications including hotels, restaurants, theme parks, streets, crosswalks and sidewalks to name a few.

Increte Systems manufactures a complete line of decorative concrete products and systems all supported by a worldwide network of factory-trained contractors and distributors. Increte Systems offers complete factory training and technical support as well as worldwide distribution.



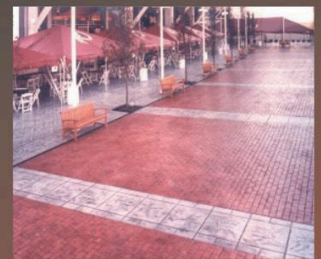
The Future Of Concrete

1611 Gunn Highway, Odessa, Florida 33556 U.S.A.
Tel: (813) 886-8811, (800) 752-4626
Fax: (813) 920-1516
www.increte.com



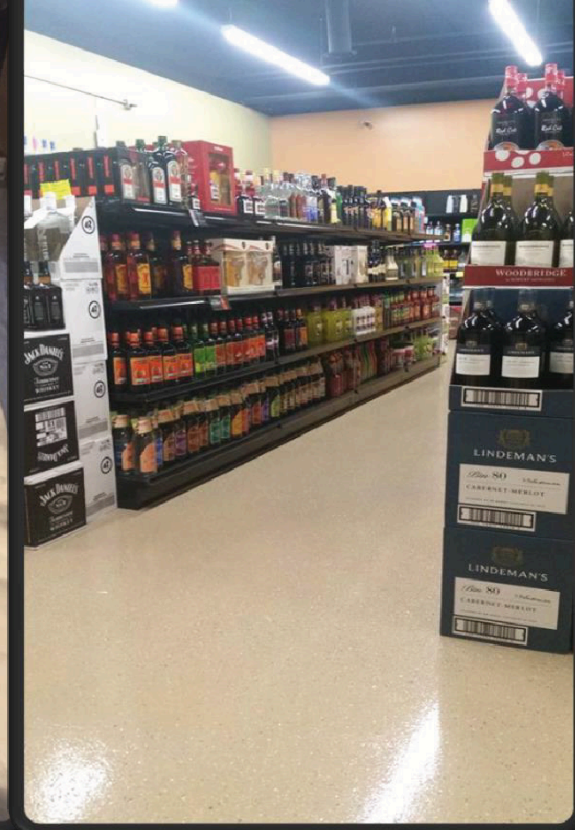
DECORATIVE CONCRETE TECHNOLOGY

INCRETE



VS Pavers





Over 10 years of successful knowledge & experience brought to you in our Full-line of Epoxy Installation Products – now being offered for sale to EVERYONE!

All Your Decorative Coating Products & Accessories Proven To Work

Entrepreneurs

Do it Yourself Installers

Contractors
Self Starters
Project Managers
Owners

Decorative Coatings Made Easy!



Brought to you by:
Upstate Increte, Inc
 1029 Lyell Ave
 Rochester, NY 14606
 (585) 254-2010 Page | 24
 CustomerService@UpstateIncrete.com